

CANICALSYN

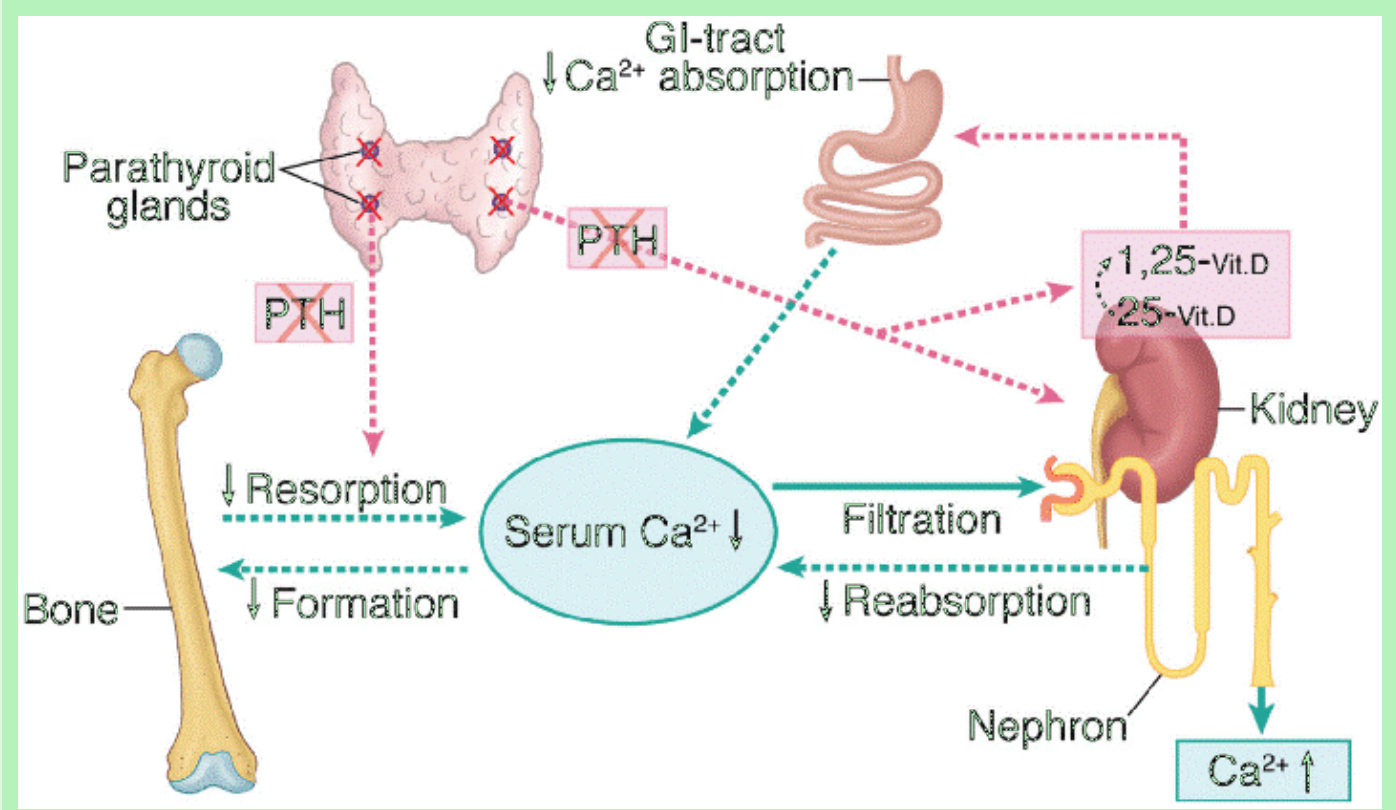
Calcium Supplement for Healthy & Stronger Bones

The mineral element found in the greatest abundance in mammals is calcium. It is vital for healthy bones and teeth (where 90% of this mineral is found) where along with phosphorus it brings rigidity and shape to these structures. Two macronutrients which are in close balance with one another are calcium and phosphorus.

Similar to calcium, a large proportion of phosphorus (over 80%) is retained in the bones and teeth. Other roles include its presence in cell membranes (as phospholipids) and the provision of energy at a cellular level. Phosphorus is also a structural component of DNA and RNA, the molecules that carry the cell's genetic code.

Calcium deficit in dogs

During pregnancy, the demand for calcium increases due to mammary gland development and fetal demand. The demand for calcium will continue to increase at whelping and during lactation. The parathyroid gland, which regulates calcium levels in the blood, will take calcium from the bone to supplement calcium levels as needed.



The classic syndrome of calcium deficiency in dogs is known as nutritional secondary hyperparathyroidism (NSHP), which is caused by a persistent decrease in circulating calcium in the blood (hypocalcaemia). Milk fever in dogs, also known as canine eclampsia or lactation hypocalcaemia, is a condition that can develop after whelping (giving birth) to the nursing mother. During lactation (producing milk) calcium is transferred from the mother to her puppies through her milk. usually this isn't a problem, as the mother has access to calcium from her diets as well as from calcium stores in her body.

CANICALSYN is a perfect calcium supplement to improve and regulate the calcium level during different stages of growth and development in order to accomplish the better health of puppies and lactating animals.

Each 20 ml of CANICALSYN consists of:

Calcium - 350 mg, Phosphorus - 280 mg, Vitamin B12 - 20 mcg and Vitamin D3 - 150 IU

Benefits of CANICALSYN

- Improves skeletal, muscular strength, growth and fertility
- Helps to maintain optimum Calcium: Phosphorus ratio
- Prevent leg weakness eclampsia & corrects nutritional deficiencies
- Helps to prevent bone related disorders
- Making stronger bone and overall good health in growing animals
- Promotes faster healing of fractures

Recommended usage

- Dogs: 10 -20 ml twice daily
- Pups & Cats: 5 ml twice daily
Should be given daily for 7-10 days or as recommended by Veterinarian

Presentation: 100 ml, 500 ml & 1 litre



Free From Hormones & Antibiotics

Animal Feed Supplement

Not For Medicinal use

Not For Human Use

Catalyst LifeSciences Pvt. Ltd.

An ISO 9001:2015, ISO 14001:2015, HACCP Compliance Certified Company

Corporate Office: # 5, 301, 3rd Floor, Greenwood Plaza, Sector 45, Gurugram - 122003, Haryana

Customer care #: +91 892 988 1235; Email: support@catalystlifesciences.in

For more information please visit: www.catalystlifesciences.in

DISPOSAL OF BAD AND OUTER PACKAGE: Do not contaminate water, food or feed by storage and disposal. Completely empty container into application equipment. Triple rinse pail and offer for recycling or reconditioning. Containers can also be disposed of in a sanitary landfill or by incineration, or in accordance with guidance from your local waste regulation authority, such as by burning (if burned, stay out of smoke). When applying this product to water bodies, avoid solid particles from falling on nearby ground where birds and feed may be present.

