



#PLM

A Complete Hygiene Solution for dry litter Sanitization

Poultry farming operations always run the risk of not being fully productive primarily due to the result of poor sanitation standards. Proper measures need to be put into place to avoid various diseases but diseases easily occur and the conflict against these agents has always been an on-going effort with biosecurity measures as the first and foremost line of defense to protect the farm health

Litter is a very important product in poultry growing, because birds are exposed to the litter and its contents like various microbes, moisture, ammonia, dust, odour, and texture, from the first day of life. Improperly managed litter can facilitate the spread of infectious diseases and create problems leading to serious economic losses.

#PLM is a unique litter conditioner and a hygiene solution in powder form, with very broad effect against moisture, smell, bacteria, fungal spores and litter borne complications.

- A researched product, which has been tested through various farm level trials for use as a hygiene product
- Is environment friendly and has a well-documented effect on the most common pathogens & fungi spores
- Does not dissolve or loosen floors or pens, nor does it dry out the animal's thin skin, which can be susceptible to abrasions and cuts, that can then lead to bacterial infection and disease.
- No need to use gloves when spreading #PLM but is always advised to use one
- Binds ammonia to such a level, that both humans and animals can stay around without suffering from strong smell or breathing difficulties.
- Absorbs damp and moisture and is therefore particularly useful in pens with high humidity
- Sanitizes and cleans the environment, reduces the level of infection and therefore ensures healthier animals
- Can be used for all farmed animals and is an absolute necessity for professional livestock farmers.
- Is not harmful to either humans or animals.

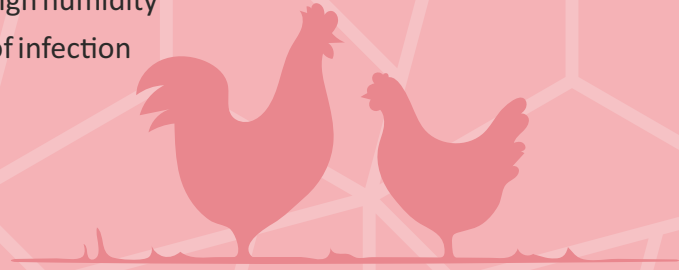
#PLM consists of:

- Sustained Release Oxidizing agents +
- Plant Polyphenols +
- Essential Oils +
- Ammonia Neutralizers +
- Moisture Absorbing Clay and Polymers



#PLM is unique with synergistic effect:-

- Environment friendly and keeps the environment healthy
- Slow Release of oxidizing agents, extract polyphenol & essential oils sanitize the litter to eliminate microbes
- No degradation of litter nitrogen or protein to Ammonia, hence less ammonia
- Effective against most common pathogens and fungal spores
- Binds ammonia very effectively with free human and animal movement
- No phosphates added and pH neutral
- Absorbs damp and moisture hence can be used in pens with high humidity
- Disinfects and cleans the environment and reduces the level of infection
- Can be used for all domestic animal pens



Free From Hormones & Antibiotics

Animal and Poultry Supplement

Not For Medicinal use

Not For Human Use

Recommendations for Usage of #PLM:

- 50 g to 100 g (One handful) per square meter to be spread twice a week, based upon the specific farm requirement and necessities
- This is usually sufficient to maintain a good and healthy environment in a production unit.
- In very humid conditions or in case of heavy infections, it is recommended that #PLM is used more often, as advised by a Veterinarian / Poultry Expert
- Use #PLM once a week in the nesting boxes as well as on the entire floor area, to ensure the conditions are always at the highest optimum level which means that bacteria are controlled, the ammonia is bound, and the moisture is absorbed and the foot pad injury is minimized.

Presentation: 1 Kg & 5 Kg HD Aluminium Pouch & 20 Kg Paper Bag with Outer Lining

Catalyst LifeSciences Pvt. Ltd.

An ISO 9001:2015, ISO 14001:2015, HACCP Compliance Certified Company

Corporate Office: # 5, 301, 3rd Floor, Greenwood Plaza, Sector 45, Gurugram - 122003, Haryana

Customer care #: +91 892 988 1235; Email: support@catalystlifesciences.in

For more information please visit: www.catalystlifesciences.in

CATALYST
Beyond Innovations

DISPOSAL OF BAD AND OUTER PACKAGE: Do not contaminate water, food or feed by storage and disposal. Completely empty container into application equipment. Triple rinse pail and offer for recycling or reconditioning. Containers can also be disposed of in a sanitary landfill or by incineration, or in accordance with guidance from your local waste regulation authority, such as by burning (if burned, stay out of smoke). When applying this product to water bodies, avoid solid particles from falling on nearby ground where birds and feed may be present.